





LANDSLIDE ADVISORY




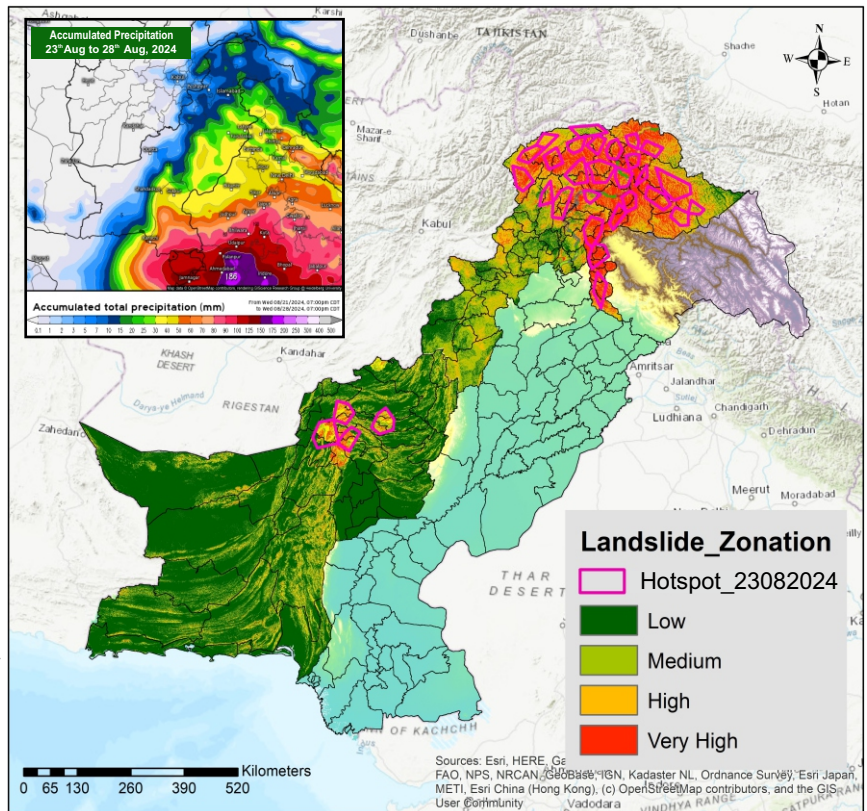
23th Aug to 28th Aug, 2024

FORECAST

 Reference to National Disaster Management Authority Weather Alert dated 23th Aug, 2024, scattered to widespread heavy rainfall is expected in Chitral, Dir, Charbagh, Malakand, Hazara, Haripur, Mansehra, and Abbottabad in KP, while Gilgit, Diamir, Nagar, and Hunza in GB.

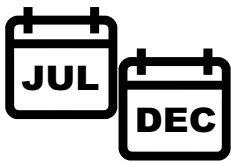
 As heavy to moderate rain may persist for some days, localized landslides may occur in very high to moderate risk zones .

 Karakoram Highway along Hunza (approx 50.02kms), at Nagar (approx 58.06kms), at Gilgit and Diamir (approx 54.06kms), at Lower Kohistan (approx 44.03kms), at Upper Kohistan (approx 34.02kms) is at high risk of landslide.



LANDSLIDE VULNERABLE ZONES

BE PREPARED FOR LANDSLIDE



Peak season is July through December



That last a Few Hours or Several Days

LIKELY IMPACTS OF LANDSLIDE



Road Closures



Isolation of Communities



Structural Damage






Health and Safety Risks

LIKELY EXPOSED AREAS

KHYBER PAKHTUNKHWA	Mingora	Swat	Shangla	Abottabad	GILGIT BALTIKISTAN	Hunza	Skardu	Ghanche
	Battagram	Mansehra	Haripur	Kohistan		Gilgit	Nagar	Diamir
AZAD JAMMU & KASHMIR	Muzaffarabad	BALUCHISTAN	Sherani	Zhob	Musakhel	Killah Saifullah		
Haveli	Bhattian		Pishin	Ziarat	Kalat	Quetta	Mastung	

IMMEDIATE ACTION

-  It is advised to be watchful of Landslides, Slope failures, Rock falls and Ground Subsidence in high vulnerable zones (encircled) in map, avoid unnecessary travel.
-  PDMA's, Rescue Services, Armed Forces and leading NGOs / CSOs to ensure availability of personnel / equipment in the indicated areas and be on stand-by for rapid response in case of any forecasted adverse weather systems.
-  Stay updated on weather & roads condition through social media and local news.

